

CREATIVE

A USER GUIDE TO
CREATIVE® **iROAR™GO**



Discover the many features of the Creative iRoar Go!



Discover more ways
to experience your
Creative iRoar Go!

Model No.: MF8225

<http://www.creative.com/support/iroargo>

Bluetooth® Version: Bluetooth 4.2

Operating Frequency: 2402 - 2480 MHz

DC Output: 5V \equiv 1000mA

Energy Saving Information

Power consumption

- Standby/Off : < 0.5 W

- Networked Standby : < 3 W (Bluetooth)

< 3 W (USB)

< 3 W (all network ports activated)

Power Management

- Power consumption < 0.5W after 28 hours inactivity when all network ports are deactivated / disconnected

- Networked standby within 20 minutes inactivity (Bluetooth, USB)

Activation & deactivation of wireless network port(s)

- To activate, perform Bluetooth device pairing

- To deactivate, disconnect Bluetooth from external device providing the audio source



Power Adapter Information

Model Number: FJ-SW1501600N

Input: 100-240VAC 50/60Hz

Output: 15VDC 1.6A

Operating Temperature range: 0°C to 45°C

Water resistance IP ratings: IPX6 (IEC 60529) with port covers closed and tightly sealed.

Supported Bluetooth profiles*:

A2DP (Wireless Stereo Bluetooth), AVRCP (Bluetooth Remote Control), HFP (Handsfree profile)

Supported Codec: SBC, AAC

Operating Range: Up to 10 meters, measured in open space.

RF Output Power: < 4 dBm

Walls and structures may affect range of device.

Supports microSD cards of Class 10 and above, up to 32GB in FAT16/FAT32 format

Supports USB flash drives up to 128GB in FAT16/FAT32/exFAT format

Supported audio formats: MP3, FLAC and WAV (16 bit 48Khz PCM)

Support MP3 up to 320kbps.

Support FLAC up to 1.3Mbps.

Recommended external electret microphone impedance: 2.2k ohm

Records audio in MP3 format.

Note: Compliance markings are located on the bottom of this product.

* Refer to your Bluetooth device (notebook¹, PC¹, or mobile device²) manufacturer's documentation/ website for supported profiles.

¹ Compatible with PC (Windows 7/8/8.1/10), Apple Macintoshes (Mac OSX 10.10 and above) equipped with Bluetooth wireless stereo.

² Compatible with most major brands of Bluetooth A2DP enabled mobile phones.

Compatibility Disclaimer

Wireless performance is dependent on your device's Bluetooth wireless technology. Refer to your device manufacturer's manual. Creative will not be liable for any lost of data or leakages resulting from the use of these devices.

Product Registration

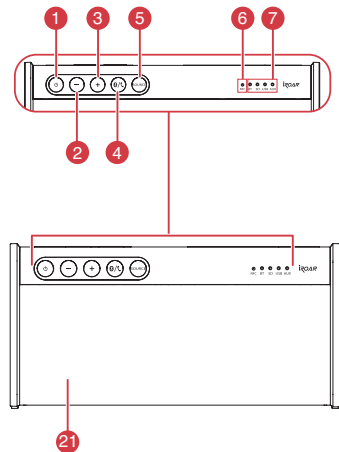
Registering your product ensures you receive the most appropriate service and product support available. You can register your product during installation or at <http://www.creative.com/register>. Please note that your warranty rights are not dependent on registration.

Safe Removal of Built-in Battery

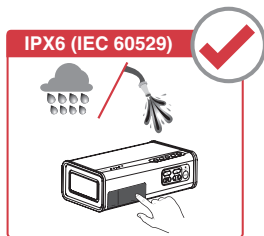
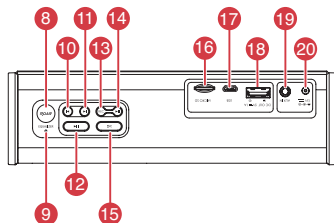
Detailed instructions on removal of integrated battery can be found at creative.com/support/iRoARGo, these instructions are meant strictly for independently qualified professionals.



Front



Top



- | | |
|--|--|
| 1. Power button / Battery Status Indicator | 12. Play / Pause Button |
| 2. Volume - | 13. Record Button / Recording Status Indicator |
| 3. Volume + | 14. [Record] Play / Pause Button |
| 4. Bluetooth® Button / Status Indicator | 15. MP3/FLAC Shuffle Button / Shuffle Playback Indicator |
| 5. Source Button | 16. MicroSD Slot |
| 6. NFC touchpoint | 17. Micro USB Connector |
| 7. Source Indicator | 18. DC Out (USB 1.0A) / USB Flash drive Connector |
| 8. ROAR Button / Status Indicator | 19. Aux-In / External Microphone In |
| 9. Equalizer Status Indicator | 20. 15V DC In |
| 10. Previous Button | 21. Microphone |
| 11. Next Button | |

Power Adapter

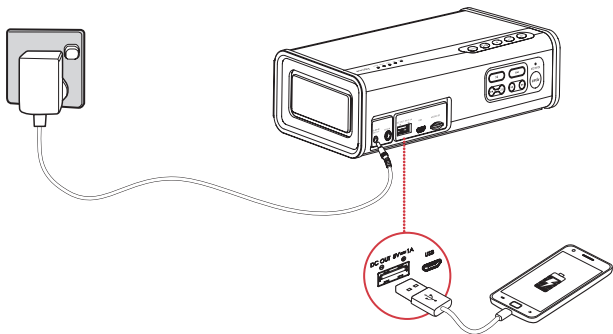


3 Hours

Battery Life: Up to 12 hours (Actual battery life may vary with use, settings and environmental conditions)

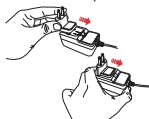
Use only bundled adaptor

The Lithium-ion battery life may suffer when it is constantly fully depleted or overexerted at low voltage. It is a good practice to keep battery well charged.

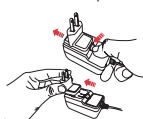


Adapter Model No.: FJ-SW1501600N

Assembling the
Power Adapter



Removing the
Power Adapter







The dual-purpose battery powers your iRoar Go and also charges your smartphone!

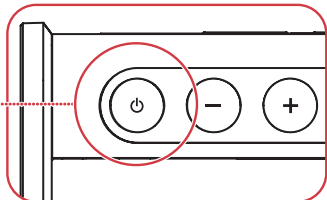
Here's how you do it!

Simply connect a USB cable to the iRoar Go's USB DC Out and the other end to your smartphone when the speaker is turned on.

Charging your speaker - Battery status indication

Whenever the speaker is connected to the power adapter, the battery status indicator will continually blink to indicate charging, or be continually lit to indicate full charge.

Battery Power	Status indication
Battery full	 Green
Battery charging	 Blinking green
Battery Half Full	 Orange
Battery low	 Red



Power Saving

For better user connectivity experience, the iRoar Go automatically enter auto standby mode after approximately 28 hours of inactivity when the power adapter is attached via a main outlet to the speaker. This power saving mode can disabled via the iOS or Android mobile app if desired.

Note: The speaker automatically powers down after 15 minutes when battery operated if there is no Bluetooth or USB connection, and no audio recording/playback. This feature helps to protect the internal battery and cannot be disabled.

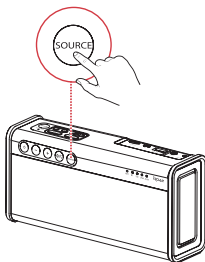
Source selection

The Source Indicator lights up to show which source is currently selected for listening, and you could press the source button to manually switch between available sources

Source Indicator	When?
BT	Waiting for Bluetooth pairing
	Waiting for Bluetooth connection
	A mobile device is brought close to NFC touchpoint
SD	Recording from internal Mic
	Playing back recording
	Playing back music from SD card
USB	Connected to computer*
	USB Flash drive is inserted*
Aux	Aux in cable is inserted
	Mic adapter is inserted
None	Speaker is turned off

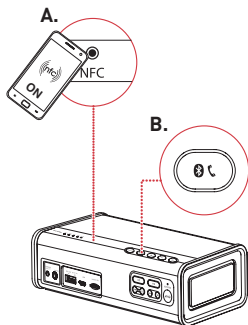
* If a USB Flash drive and a Computer USB audio connection are both present, the USB audio connection will be given priority. To hear audio playback from the USB Flash Drive, please disconnect the USB connection to your computer

Here's how you do it!



The iRoar Go lets you stream music wirelessly.

The iRoar Go connects to Bluetooth devices. NFC technology makes connecting even easier – just tap and play!



Here's how you do it!



1 A. One-touch pairing with NFC

Turn on NFC on your NFC-enabled device and tap your device on the NFC logo to connect.

To disconnect, tap your device on the NFC logo again.

OR

B. Manual Bluetooth pairing

- (i) Press and hold  /  until the Bluetooth status LED blinks white rapidly.
- (ii) Select **Creative iRoar Go** on your device.

Bluetooth status LED	Status
Green LED stays lit	Powered ON but not connected to any Bluetooth devices
White LED blinking rapidly	Bluetooth Pairing Mode, waiting for device to connect
White LED stays lit	Connected to a Bluetooth device

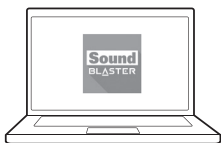
- 2 Start playback on your connected device.

For the complete iRoar Go experience

Gain full control of your iRoar Go and enhances your listening experience with professionally tuned presets and customizable sound controls.



Search for “**Sound Blaster Connect**” on the Apple® App Store™ or Google Play®



Download **Sound Blaster Connect** for Mac or PC from www.creative.com/support/iroargo

Understanding Roar, Custom Audio profiles and EQ

The iRoar Go is carefully tuned to produce detailed, dynamic and beautifully natural sound that belies its compact size. Even at high listening levels, the sound remains well balanced and clean with minimal compression [NOT common for battery operated portables]

ROAR mode takes this great sound further to a whole new level. Select ROAR mode to instantly enhance the loudness, depth and spaciousness of any music. Updated for the iRoar Go, ROAR mode now incorporates Terabass processing and intelligently compensates for the human ear's loss of perceived bass and treble details during low playback level as well – dramatically improving the fullness and clarity of your music even at whisper low volumes.

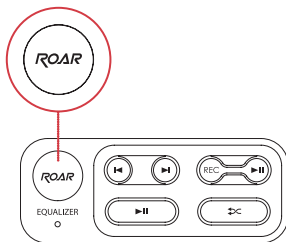
Equalizer mode. Choose from a variety of expertly tuned presets to suit your listening environment and preference, or use the equalizer option to fine tune your Roar's sound, Equalizer mode allows you to make the sound of the iRoar Go uniquely yours.

To explore the endless possibilities of Equalizer mode, download the free Android or iOS mobile app now!

Here's how you do it!

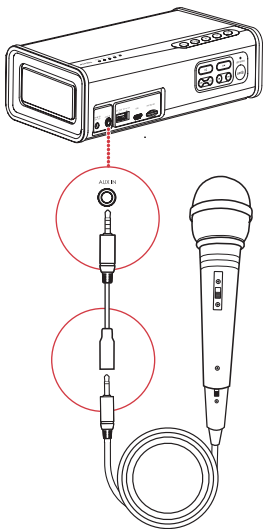
To toggle between modes, simply just press the **ROAR** button.

Toggles from **ROAR ON** -> Equalizer Mode -> OFF



Connect an external microphone to your iRoar Go to transform it to a portable public address (P.A.) system

The iRoar Go includes a built in microphone preamplifier with limiter circuitry to help prevent distortion. Compatible with most electret condenser and dynamic type microphones (cardioid / unidirectional type microphone are strongly recommended) .



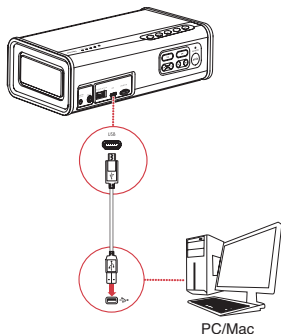
Here's how you do it!

- 1** Connect an external microphone to the mic adapter
- 2** Plug the adapter into the Aux-in socket
- 3** Adjust the volume and the system is ready to use



If you encounter howling noise (feedback), try reducing the speaker volume, facing the microphone away from the speaker or increasing the distance from the microphone to the speaker. Do not cover the microphone with your hand, as this will increase the possibility and severity of feedback.

Switching to USB Audio



Note: If the iRoar Go is not detected by the computer after your computer recovers from sleep / hibernate / restart, please Power OFF and ON the iRoar Go to re-establish the USB audio connection. You may also need to restart your computer's media player.

Here's how you do it!

- 1 Turn on the iRoar Go and connect it to a PC/Mac. The Source indicator will be lit above "USB"
- 2 Play your music on the PC/Mac.

? If no audio is heard

For Windows:

Click Volume Control and select **Creative iRoar Go** as your output device.

For Mac:

1. Go to System Preferences and click **Sound**.
2. Click the Output tab and select **Creative iRoar Go**.

Your iRoar Go comes with a built-in FLAC/MP3 player.

Beside streaming music from your smart phone wirelessly via Bluetooth, the iRoar Go can also play audio files on a microSD card or USB Flash drive with the built-in FLAC/MP3 player.




Playback tips


- You can play **FLAC**, **WAV** or **MP3** files.
- The iRoar Go supports microSD or microSDHC cards up to **32GB**.
- The iRoar Go has a convenient one-touch play function. Press play/pause button to power on your speaker and play music stored on your microSD card.

Here's how you do it!

- 1 Insert a microSD card or USB Flash Drive.



- 2 Press **▶||** . 

- 3 Navigate through tracks. 

To skip tracks:

Press **◀** or **▶** during playback.

To skip folders:

Press and hold **◀** or **▶** during playback.

Recording is made really easy with the iRoar Go.

Record your voice to the iRoar Go, just insert a microSD card and you're ready to go



Recording specifications

- Audio recording is saved in **MP3** format in the **RECORD** folder.
- For recording, a **Class 10** microSD card is recommended.
- Each recording is limited to a length of 1Hr, and up to 50 recordings could be kept on the microSD card.
- Simultaneous Bluetooth, Flac/MP3, as well as USB audio playback during audio recording is not supported.

Here's how you do it!

- 1** Insert a microSD card.



microSD Card

- 2** Select source.


To record from built-in microphone

– Please ensure there are no connectors plugged into the Aux-In socket.

To record from an external microphone

- Plug in an external microphone to the microphone adapter.
- Plug in the microphone adapter to the Aux-In socket.
- Ensure the “Aux” source is selected”

- 3** Press  (REC) to start recording.

Press  (REC) again to stop recording.

- 4** Press  (REC) to playback recordings.





To skip recorded tracks:

Press  or  during playback.

You can use the iRoar Go as a speakerphone

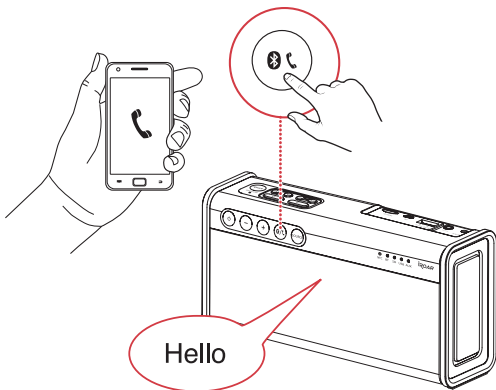
When your phone is connected to the iRoar Go you can simply answer calls without lifting your phone – just press a button!

Here's how you do it!

- 1 Connect your smart device.
- 2 Press  /  to answer an incoming call.
- 3 Press  /  again to end a call.

To reject a call:

Press and hold  /  for more than 2 seconds.



Perform the following trouble-shooting steps before sending it for servicing. For more information, please refer to www.creative.com/support.

If there is no audio heard after connecting your phone or tablet with the iRoar Go via Bluetooth.....

Check the source selection

The iRoar Go allows the Bluetooth connection to be maintained while listening to another source. This allows the Mobile App to maintain full control over the speaker. Ensure the source selection is set to BT to listen to Bluetooth audio.

How do I disable Voice Prompts or Power saving mode?

Advanced settings could be changed via the iOS and Android Apps

1 Search for 'Sound Blaster Connect' app at the Apple App Store™ or Google Play®


2 Download and launch the App

3 Go to **Menu > Settings**

What should I do if the speaker is not behaving the way it should?

Perform a reboot

You can perform a reboot if the speaker becomes unresponsive.

Hold the  button for 10s, then release to perform speaker reboot.

Perform a master reset

You can perform a factory master reset to clear paired device list. With your speaker powered on, place the speaker in Bluetooth pairing mode, then hold the Shuffle button until until a voice prompt is heard indicating master reset has been completed.

CREATIVE

creative.com

Supplementary documentation for this product includes: DoC, safety and regulatory information, ErP Regulatory information, and other related regulatory notices. This product complies with all applicable directives, a copy of the EU DoC is available at creative website. For more details please visit creative.com/support/iRoarGo

For the latest, online version of this guide, visit creative.com/support/iRoarGo

Creative Limited Hardware Warranty (“Creative Warranty”)

Creative warrants that the accompanying product is free from material or workmanship defects for a period of 12 months (non-transferable Creative Warranty period) from your purchase date. In the event of a genuine product failure, Creative will assume repair or part replacement (new or refurbished) within the Creative Warranty period. However, this Creative Warranty does not cover (but not limited to) normal wear and tear, abnormal usage, improper storage and handling, unauthorised modifications or repair, damages arising from an Act of God and theft. In the event of a genuine product failure you must provide Creative with the product and proof of purchase of the product by a dated itemised receipt. For the entire details on the Creative Warranty period of your product, Creative Warranty terms, product returns and repair procedure, and Creative Customer Support services and contact information, you are advised to refer to our website at www.creative.com. From here, select your country of residence and proceed to the Support section. We also recommend you to register your product with us at www.creative.com/register to enjoy a host of additional product benefits that includes latest news and promotions.

Note that your entitlement to the Creative Warranty is not dependent on product registration.

Please note the Creative Warranty does not affect your statutory rights. Thank you.

The limited warranty for the Product is for twelve (12) months (for the European Union, twenty-four (24) months (excluding all wear and tear), subject to certain exceptions as stated in the EU Directive 1999/44/EC**) from the date of Your purchase (“Warranty Period”). The Warranty Period will be extended by each whole day that the Product is out of Your possession for repair under this warranty.

**Only Applicable for European (EU) countries

A seller in the European Union (EU) may be entitled to refuse to repair or replace the goods if it is (i) impossible or (ii) disproportionate (eg. where the costs are unreasonably high for the seller) to do so, taking into account the value the goods would have had (if there were no lack of conformity), the significance of the lack of conformity and where an alternative remedy would be completed without significant inconvenience to the consumer. In such cases, the consumer may ask for an appropriate reduction of the price or have the contract rescinded. The consumer is not entitled to have the contract rescinded if the lack of conformity (or defect or fault) is minor. In which case, the seller is entitled to turn down a request for rescission of the contract in such a situation. For further details, please refer to Articles 3(3), 3(5) and 3(6) of the EU Directive 1999/44/EC.

For Australia only:

Our goods come with guarantees that cannot be excluded under the Australian Consumer Law. You are entitled to a replacement or refund for a major failure and for compensation for any other reasonably foreseeable loss or damage. You are also entitled to have the goods repaired or replaced if the goods fail to be of acceptable quality and the failure does not amount to a major failure.

(Creative Labs Pte. Ltd., 31 International Business Park, #03-01, Creative Resource, Singapore 609921. Telephone: +65 6895 4433 (standard international call charges apply).
Creative Limited Hardware Warranty (“Creative Warranty”)

© 2016 Creative Labs Pte. Ltd. All rights reserved. Creative, the Creative Logo, Sound Blaster, iRoar, iRoar logo and SBX Pro Studio are trademarks or registered trademarks of Creative Technology Ltd. in the United States and/or other countries. Apple is a trademark of Apple Inc., registered in the U.S. and other countries. App Store is a service mark of Apple Inc. Google Play is a trademark of Google Inc. The Bluetooth® word mark and logo are owned by the Bluetooth SIG, Inc. and any use of such marks by Creative Technology Ltd is under license. microSDHC Logo is a trademark of SD-3C, LLC. All other trademarks are the property of their respective owners and are hereby recognized as such. All specifications are subject to change without notice. Actual product may differ slightly from images shown. Use of the product is subject to a limited warranty.